



Shadowspec  
**UNITY**<sup>TM</sup>  
*Multi-Canopy Cantilever Umbrella*



## The Evolution of Shade



**10 YEAR**  
Fabric  
Warranty\*  
BEST-IN-CLASS



**6 YEAR**  
Frame  
Warranty\*  
BEST-IN-CLASS



Trusted for  
over 25 years



Hand-built in  
New Zealand



Marine  
Grade

# SHADOWSPEC UNITY™ Multi-Canopy Cantilever Umbrella

## Patented & Trademarked Technology



### SHADOWLIFT™

Gas-assisted deployment for an easy lift.



### SHADOWGLIDE™

Engineered to open or close in 5 seconds.



### SHADOWHUB™

LED light technology built-in and app controlled.



### SHADOWLOCK™

Integrated security and wind-protection.

## Canopy



**Fabric Warranty\***  
BEST-IN-CLASS

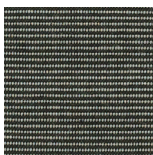
### Quick-Ship Stock Colors



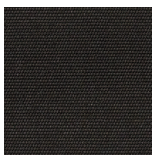
Oyster



Alpine Stone

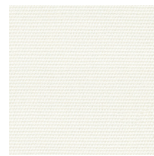


Charcoal Tweed



Black

### Special-Order Colors\*\*



Natural



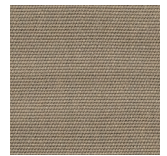
Storm



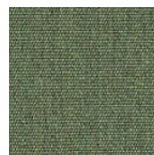
Charcoal



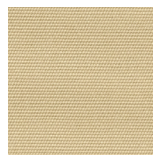
Slate



Taupe



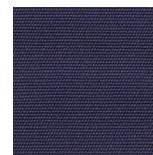
Fern



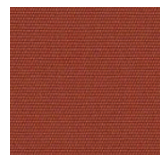
Linen



Sunflower Yellow



Captain Navy



Terracotta

**RECASENS**  
BCN 1886

 **sunbrella®**

\*\*Special-Order Colors are non-stock and will incur an additional lead time and surcharge. Full Sunbrella range is available as a custom color option.



Marine Grade



Solution-dyed, High Color Fastness



UV and Fade Resistant



UPF 80 UV Protection



Eco-friendly Production



Breathable Weave



Mold and Mildew Resistant



Oil and Stain Repellent



Easy Clean



Water Resistant



Chlorine Resistant



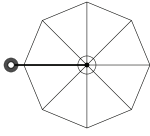
Tear Resistant



## Size & Configuration

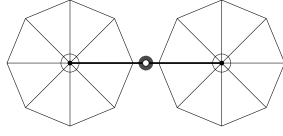
### OCTAGON UNO

11' | 3.5m or 13' | 4.0m



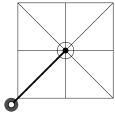
### OCTAGON DUO

22' | 7.0m or 26' | 8.0m



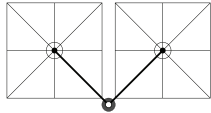
### SQUARE UNO

8' | 2.5m or 10' | 3.0m



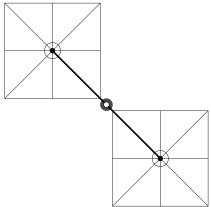
### SQUARE DUO

16' | 5.0m or 20' | 6.0m



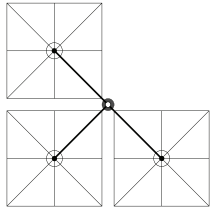
### SQUARE DUO

16' | 5.0m or 20' | 6.0m



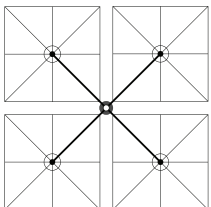
### SQUARE TRIO

16' | 5.0m or 20' | 6.0m



### SQUARE QUATTRO

16' | 5.0m or 20' | 6.0m



*All sizings and conversions are approximate and subject to change without notice. Refer to specsheets for exact, up-to-date measurements.*

## Features



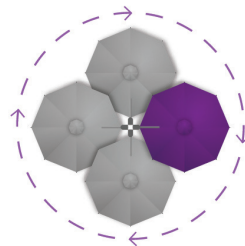
### EASY OPEN & CLOSE

Umbrella deployment system with no winding or cables.



### MARINE GRADE

No-rust, 316 Stainless Steel Spigot.



### FOLLOW THE SUN

Enjoy the 360° rotation for all-day-shade.

## Accessories



### LED LIGHT CONTROL

Power your light with the optional Smart Battery or Hardwire Kit.



### PROTECTION COVER

Recommended, optional care and protection for your umbrella.



### CASTOR WHEELS

Optional heavy-duty wheels so you can move your Free-standing Base.

## Mounting Options

### SURFACE PLATE

For deck, patio and concrete mounting. (316 stainless steel)



### IN-GROUND ANCHOR

For mounting with a concrete footing.



### WALL MOUNT BRACKET

For when ground mounting isn't possible. (316 stainless steel)



### FREE-STANDING BASE + ALUMINUM BASE COVER

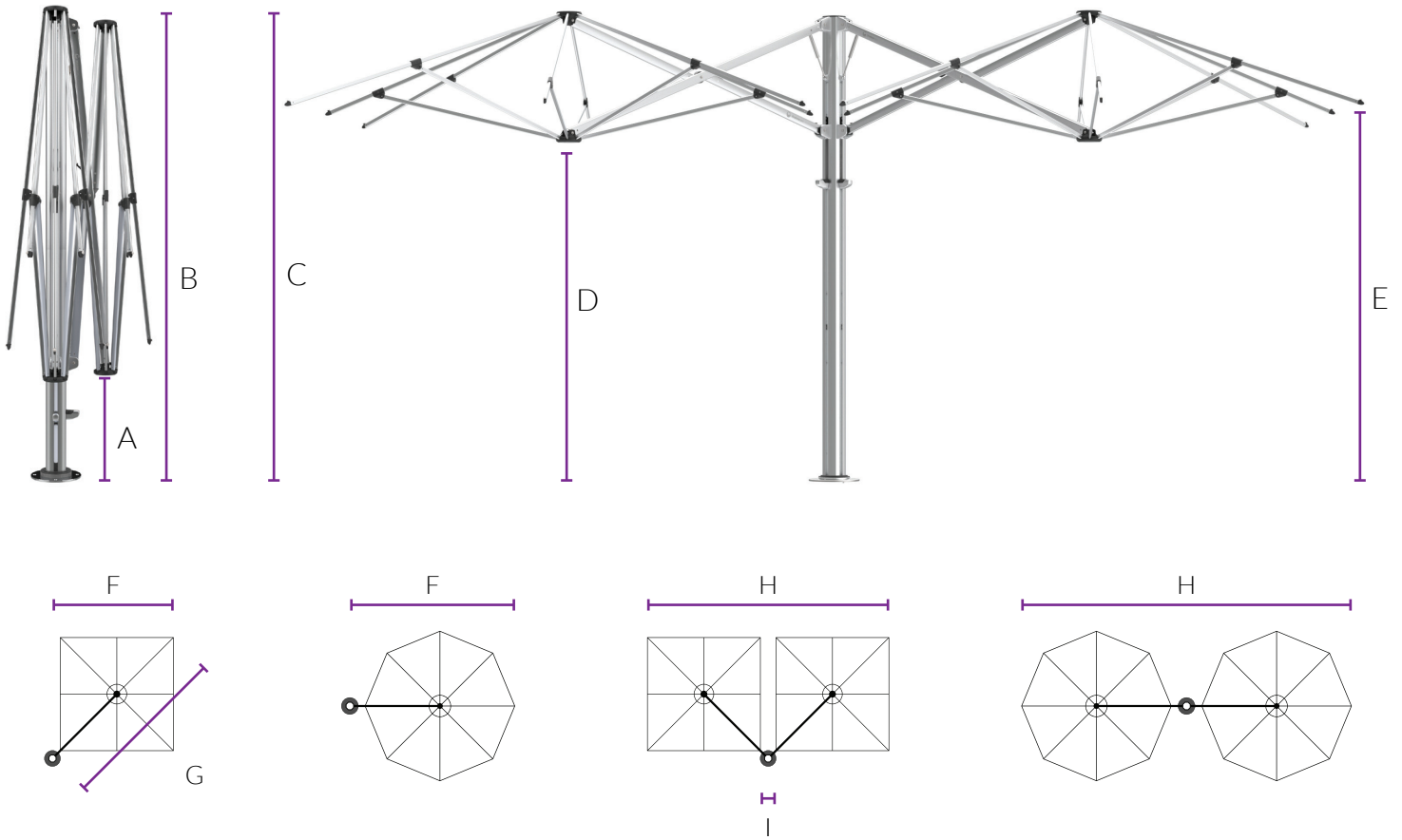
For complete customized manoeuvrability.



*Note: Fastenings are not supplied for the Surface Plate or Wall Mount Bracket..*

*Optional Castor Wheels available. Note – Concrete pavers are required for ballast (not supplied).*

# Umbrella Dimensions



## Diagram Legend

|          | 8'    | 2.5m   | 10'    | 3.0m   | 11'   | 3.5m   | 13'    | 4.0m   |
|----------|-------|--------|--------|--------|-------|--------|--------|--------|
| <b>A</b> | 2'10" | 860mm  | 2'1"   | 620mm  | 3'7"  | 1079mm | 2'10"  | 866mm  |
| <b>B</b> | 9'6"  | 2900mm | 9'3"   | 2824mm | 9'9"  | 2975mm | 9'6"   | 2899mm |
| <b>C</b> | 9'6"  | 2908mm | 9'6"   | 2908mm | 9'7"  | 2908mm | 9'6"   | 2908mm |
| <b>D</b> | 7'0"  | 2130mm | 6'9"   | 2054mm | 7'3"  | 2205mm | 7'0"   | 2128mm |
| <b>E</b> | 7'3"  | 2222mm | 7'3"   | 2219mm | 7'4"  | 2237mm | 7'2"   | 2172mm |
| <b>F</b> | 8'8"  | 2646mm | 9'10"  | 2973mm | 11'4" | 3447mm | 12'10" | 3923mm |
| <b>G</b> | 12'3" | 3742mm | 13'10" | 4205mm | N/A   | N/A    | N/A    | N/A    |
| <b>H</b> | 17'4" | 5292mm | 19'6"  | 5946mm | 22'7" | 6894mm | 25'9"  | 7846mm |
| <b>I</b> | 6"    | 160mm  | 6"     | 160mm  | N/A   | N/A    | N/A    | N/A    |

\*\*\*Free-Standing Base installations will add 6" | 165mm to the height and surface plates will add 1/2" | 12mm to the height. Adding the optional Castor Wheels to the Free-standing Base will increase height a further 2-3" | 45-80mm to the height. All sizings and conversions are approximate and subject to change without notice. Refer to specsheets for exact, up-to-date measurements.



**shadowspec**  
umbrellas with distinction